



**ELEKTRONIK SYSTEM**

*Piotr Cieślinski*

ul. Ustronna 14  
89-606 Charzykowy

+48 608 34 34 34  
elektron@metaldetektor.pl

## METAL DETECTORS WITH STAND PROBE

- The metal detector was specially made designed for product testing tall in standing position (e.g. jars without a lid, plastic and glass bottles, tall paper or plastic bags).
- Thanks to the use of adjustable sides the sides of the product stably in an upright position passes through the metal detector probe.
- The device can be equipped with automatic pusher type separator or blower and contaminated products will be separated on an open platform side platform or side platform with zone cover rejection or into an upright, closable container locked.



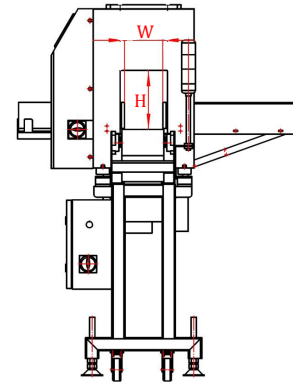
Model		<b>ELEKTRON-MD</b>
Detection level (depending on probe size)	Fe	od Ø 0,8 mm
	NoFe	od Ø 1,0 mm
	St/st	od Ø 1,2 mm
Maximum load		10 kg/m <sup>2</sup>
Standard conveyor length		1500 mm (other length optional)
Standard conveyor height		800+100 mm (other height optional)
Operator Panel		HMI touch screen (analog buttons optional)
Type of conveyor belt		Modular (polyurethane optional)
The direction of the conveyor's work		Left to Right (Right to Left Optional)
Type of control panel cover		Polycarbonate (optional stainless steel)
sides		Fixed (optional adjustable)
Pollution detection signaling		Optical-acoustic alarm and conveyor belt stop
Conveyor belt speed		Adjustable in the range of 0-35 m/min (optionally fixed)
"FROST" system		Option
Power		230V, 50HZ
Working temperature		0-45°C
Material		Glass-blasted stainless steel

## MAXIMUM DIMENSIONS TESTED PRODUCTS

<b>ELEKTRON-MD</b>	1520, 1530, 1540	1820, 1830, 1840
Height [mm]	150	180
Width [mm]	200, 300, 400	200, 300, 400

## WHAT MAKES OUR DETECTORS DIFFERENT

- Lifetime warranty on probes (excluding electronics).
- Technical support by phone or e-mail.
- Warranty and post-warranty service within 24 hours.
- Publicly available spare parts of known and reputable companies.
- Repair and modernization of equipment in accordance with requirements and expectations of our customers.
- Reactivation and improvement of all our metal detectors, even the oldest ones, to the current generation.
- Consultations and training.
- Periodic inspections of our production equipment.
- Compliance with HACCP, CE system standards, IFS and NEC.



## AUTO LEARNING SYSTEM

The **ELEKTRON-MD** series of detectors has a unique the **self-learning system** that is used in other detectors contactless. Self-learning system analyzes the tested product and automatically saves the detection parameters (e.g. the influence of the product and ambient background). Control detector the conveyor automatically moves the product through the detection probe window back and forth until graduation. This solution makes your work easier especially with heavy products. Thanks to this learning is much more accurate without interruption and also increases the level of detection and stability metal detector operation.

## AUTOCALIBRATION SYSTEM

Metal detectors of our production have built-in **auto-calibration system**, thanks to which devices do not require constant inspections service. The detection system accurately oscillates at the frequency of the test substance, he himself has variable values. management system, it is designed so that with each disconnecting the detector from the mains for about 15 minutes automatically performed background analysis and same system calibration after reboot.

## "FROST" SYSTEM

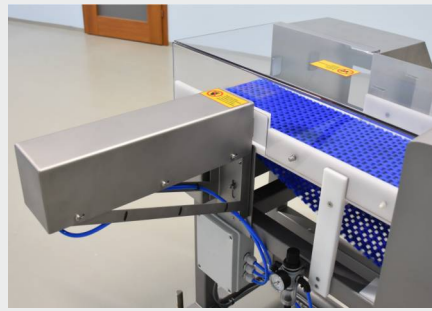
Our metal detectors can be equipped with unheard of in other detectors, the **system "FROST"** with a built-in intelligent heating and thermostat, inside the panel control that protects internal systems electronics against moisture and cold. It is the only protection against abrupt changes temperatures during washing and protects against absorption of moisture inwards (e.g. cold machine washed with hot water).

## TYPES OF RECOIL SYSTEMS



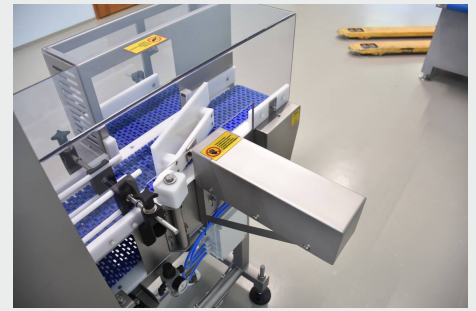
### Blower

Very efficient and ergonomic system for light products up to 0.5 kg.



### Pusher

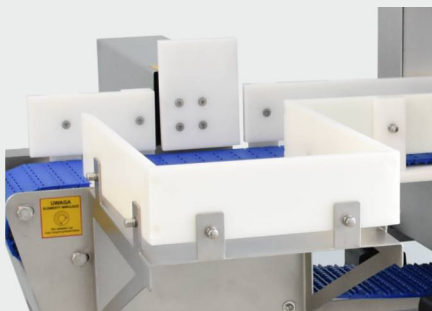
Commonly used rejection system for packaged products. We offer bulldozers for products from 1 kg to 60 kg.



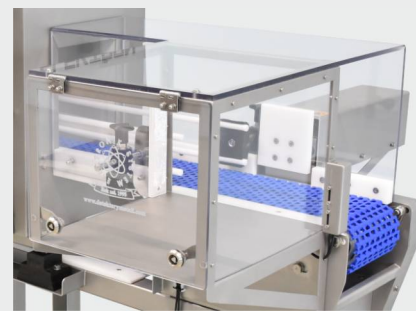
### Scraper arm (Flipper)

Quick kick-back system to save installation space for products up to 2 kg.

## TYPES OF CONTAINERS FOR REJECTED PRODUCTS



### Shelf

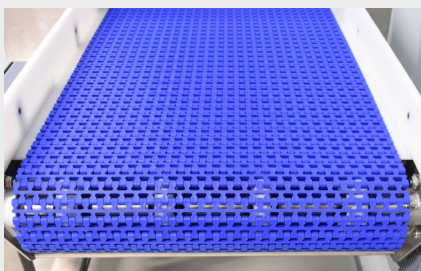


### Shelf with polycarbonate cover



### Standing front opening bin for heavy products

## METAL DETECTOR EQUIPMENT



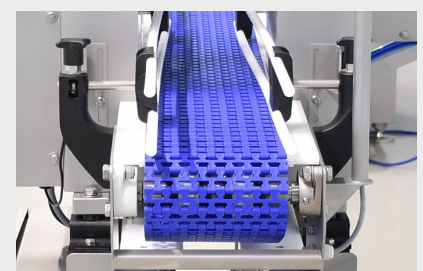
### Modular tape

used for difficult work conditions. Quick disassembly and possibility of easy washing of the tape makes it easy to keep the device in purity.



### Polyurethane tape

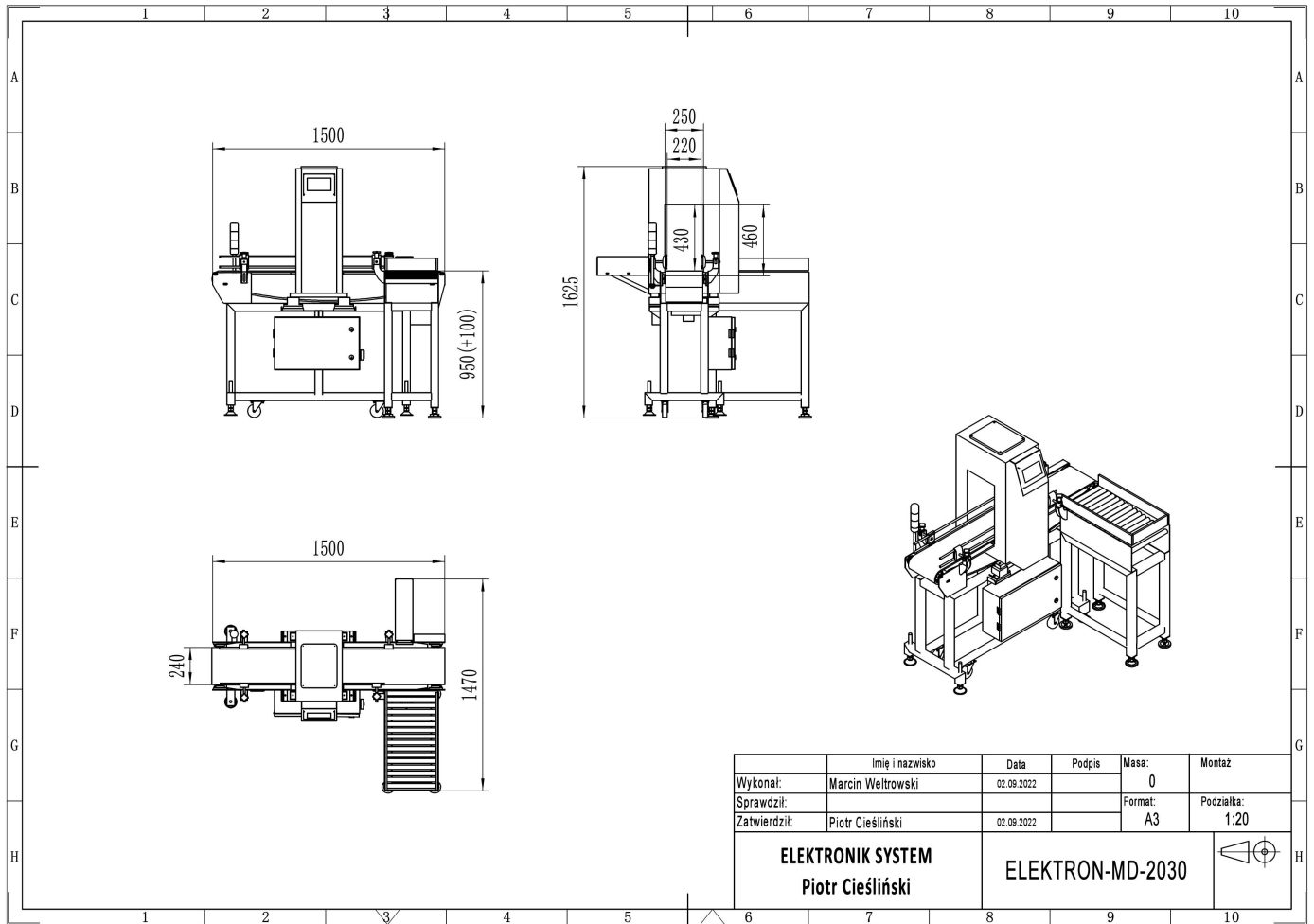
is used for transport of loose products or unpackaged products.



### Adjustable sides

enable priming of the product, mainly used for no separator.

# TECHNICAL DRAWING OF ELEKTRON-MD-2030



## OUR REALIZATIONS

